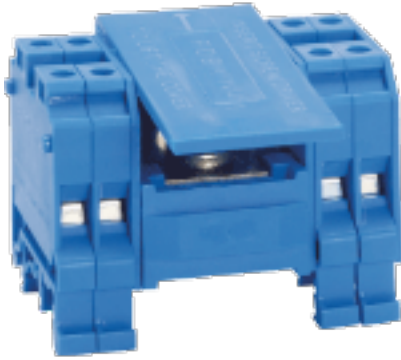


Rail Mounted Terminal Blocks : Polyamide Range Of Terminals : Distribution Block : FDBK 1X4



Type of Connection	MS Screw Clamp
Insulating Material	Polyamide 66
Terminal Pitch	61.5 mm (2.40 Inch)
Terminal Width	67.5 mm (2.63 Inch)
Terminal Height	55 mm (2.15 Inch)
Rated Cross Section	[IC-25 , OG-4] sq mm
Wire Stripping Length	12 mm
Screw Size	M3

Connection Possibility

Stranded wire	Max : [IC-25 , OG-4] sq mm	Min : [IC-10 , OG-0.5] sq mm
Solid wire	Max : [IC-25 , OG-6] sq mm	Min : [IC-10 , OG-0.5] sq mm

Ratings	IEC	UL
Voltage	800 V	600 V
Current	[IC-64 , OG-32] A	[IC-80 , OG-80] A
Conductor Size	[IC-25 , OG-4] sq mm	Min : [IC-12 , OG-20] AWG Max : [IC-4 , OG-10] AWG
Tightening Torque	[IC-2.5 , OG-0.5] Nm	[IC-22 , OG-7] LbIn

Terminal Accessories

Partition Plate Without Foot	KBX
Partition Plate With Foot	KBXF
End Clamp	SCUN, SCUSL, SCUDD, SCKN, DCKN
Marking Label	LABEL KN6.5
Group Marking Carrier	SCKNMLH, SCUNMLH, DCKNMLH
Terminal Colours	GREY, KHAKHI, RED, YELLOW, BLUE, BLACK, GREEN
Mounting Channel	CHS10, CHK10, CHS3, CHS5, CHK5, CHK3, CHKS3, CHKS5, CHKS10, CHKDS10, CHKD10