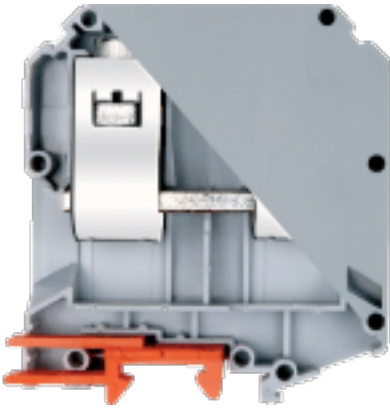


Rail Mounted Terminal Blocks : Polyamide Range Of Terminals : Feed Through Terminal : KUT 95



|                              |                      |
|------------------------------|----------------------|
| <b>Type of Connection</b>    | MS Screw Clamp       |
| <b>Insulating Material</b>   | Polyamide 66         |
| <b>Terminal Pitch</b>        | 25 mm ( 0.98 Inch)   |
| <b>Terminal Width</b>        | 83 mm ( 3.24 Inch)   |
| <b>Terminal Height</b>       | 90.5 mm ( 3.53 Inch) |
| <b>Rated Cross Section</b>   | 95 sq mm             |
| <b>Wire Stripping Length</b> | 33 mm                |
| <b>Screw Size</b>            | M8                   |



**Connection Possibility**

|                      |                 |                |
|----------------------|-----------------|----------------|
| <b>Stranded wire</b> | Max : 95 sq mm  | Min : 25 sq mm |
| <b>Solid wire</b>    | Max : 120 sq mm | Min : 25 sq mm |

| Ratings           | IEC      | UL                           |
|-------------------|----------|------------------------------|
| Voltage           | 1000 V   | 600 V                        |
| Current           | 232 A    | 230 A                        |
| Conductor Size    | 95 sq mm | Min : 2 AWG    Max : 4/0 AWG |
| Tightening Torque | 20 Nm    | 160 Lbln                     |

**Terminal Accessories**

|                                       |   |
|---------------------------------------|---|
| <b>End Clamp</b>                      | SCUN, SCUSL, SCUDD  |
| <b>Cross Connection Link Assembly</b> | CCLA95 - 2W   |
| <b>Marking Label</b>                  | LABEL KN17  |
| <b>Group Marking Carrier</b>          | SCUNMLH   |
| <b>Terminal Colours</b>               | GREY, KHAKHI, RED, YELLOW, BLUE, BLACK, GREEN                               |
| <b>Mounting Channel</b>               | CHS10, CHK10, CHS3, CHS5, CHK5, CHK3, CHKS3, CHKS5, CHKS10, CHKDS10, CHKD10 |