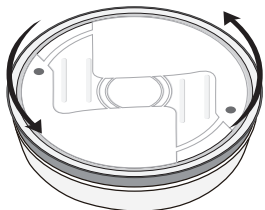
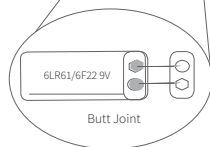
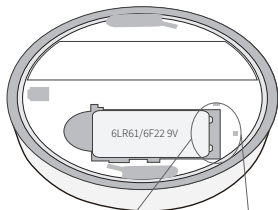


Battery replacement instructions



① Open the case by twisting the back cover.



② Replace with 1 x 6LR61/6F22 battery

CE RoHS 
Made in China

DSKH4 V1.3

The User Manual of Wireless Smoke Sensor



Features

The wireless smoke sensor is an accessory of smart alarm system.

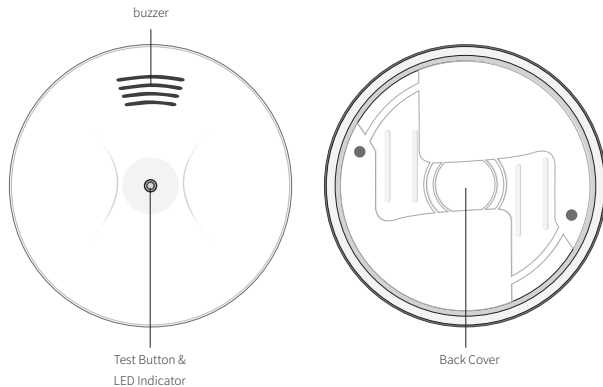
By using unique design and MCU to work with photo-electricity signal, it is dust-proof, pest-proof, anti-optical interference, etc. This product responds well to the smoke of smoldering and burning. With built-in photoelectric smoke sensor, it will trigger alarm when the smoke density reaches the alarm threshold.

In the event of low battery, the smoke detector will beep once in 1min, and push notification will be sent to the APP.

Parameters

• Working Voltage	DC 9V
• Battery	9V (1x 6F22/ 6LR61 Battery)
• Working Current	≤100mA
• Standby Current	≤20μA
• Alarm Sound	≥ 85dB/30cm
• Product Certification	BS EN 14604:2005
• Smoke Sensitivity	0.086 dB/m to 0.14 dB/m
• Transmission Distance	Without obstacle 500m
• Transmission Frequency	433.92MHz / 868.35MHz
• Working Temperature	0°C~50°C
• Humidity	10%~90%rh (non-condensing)
• Weight	109.2g (battery not included) 145g(battery included)
• Dimension	Φ106.8x32.8mm (LxWxH)(±0.1mm)

Appearance



Operating Instructions

1. Working principle

The sensor sends signal to the paired main panel when the built-in smoke sensor is triggered.

2. Pairing with main panel

- ① Scan the QR code on this accessory by App.
- ② The pairing result can be confirmed in App.

Hint: How to trigger

Press the test button.

***Test: The alarm is provided with a test button. Press this until the alarm signal sounds. The signal stops once the button is released. Test the alarm at least once a week.**

Installation & Notice

- Open the case and insert the battery.
- Pairing it with main panel before installing.
- Choose a proper position, normally the center of the detection area ceiling is recommended. Please fix the sensor base into the chosen position with screws. Be sure it is fastened tightly.
- Avoid installing sensor in places with:
 - stagnating smoke
 - heavy dust, heavy water mist or heavy oil mist
 - great humidity(>95%)
 - high wind speed(>5m/s)
- To ensure the sensitivity, please clean the sensor surface with soft bristled brush every 6 months. Make sure to turn off the power before cleaning.
- Contact your dealer when there is any problem about the product. DO NOT attempt to repair the sensor personally.
- The sensor can reduce the happening rate of disasters. But there is not guarantee for 100% safe. For your safety, please use this sensor properly and be vigilant in daily life.

After replacing the battery or after cleaning, with a vacuum cleaner for example, the alarm must be vacuumed regularly to remove dust particles and to protect it as well as possible. If the alarm fails to operate correctly, please contact the dealer or manufacturer.